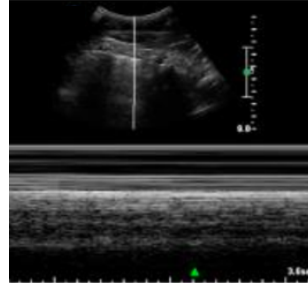




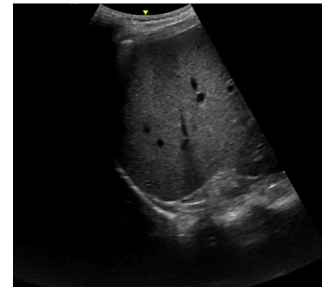
Lung Views

- Right and left lung
- Longitudinal view
- Demonstrate lung slide
- M-mode to confirm



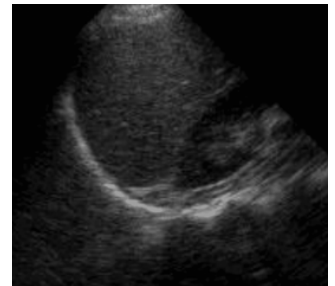
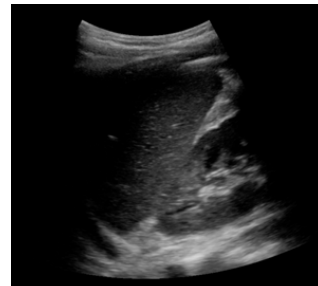
RUQ View

- Longitudinal view
- Demonstrate:
 - Hepatorenal space (Morrison's)
 - Paracolic gutter
- Right lung base/diaphragm view



LUQ View

- Longitudinal view
- Demonstrate:
 - Splenorenal space
 - Paracolic gutter
 - Left lung base/diaphragm view



Pelvic View

- Longitudinal view
- Transverse view
- Male: bladder, prostate, rectum
- Female: bladder, uterus, POD, rectum



Subcostal View

- Transverse view
- Demonstrate pericardium

